



NEWSLETTER 16 - March 2009

Nurturing home-grown development in South Africa

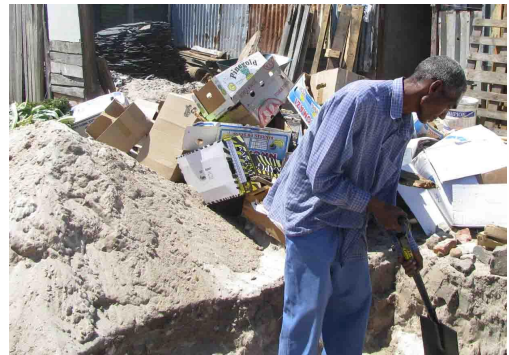
[www.thatu.org](http://www.thatu.org)

## NEW YEAR - NEW PARTNERS - NEW SHOOTS - NEW CHALLENGES

Three new food garden projects are starting in different parts of South Africa with the help of Thatu – and you. You can follow their progress on [www.thatu.org](http://www.thatu.org) – here's what they are about:

### The Thatu Soil For Life Sibanye Project

Sibanye, a flagship community project on the Cape Flats, is the subject of our Thatu Special Appeal. Despite the credit crunch, the Appeal has made a credible start.



You've raised £1,000 so far. But to achieve really exciting, long-term results Sibanye needs another £14,000 from us.

The project is ground breaking -- literally and figuratively -- because it is helping community members to grow vegetables sustainably in their own gardens in the infertile and wind-swept Cape Flats. The vegetables plus the jams and pickles they learn to make in the Sibanye kitchen provide both nutrition and income for the families.

The photographs on the right, taken by a Thatu supporter in January, show the transformation to garden in three stages: it begins with a trench filled with degradable material, including cardboard, to improve the soil; the first seedlings are then sown; and seven months later we see Peter Snyders, the Soil for Life Gardener of the year, in his flourishing garden.

There will be news of the other SFL project we are supporting, Touws River, in the next newsletter.

### The Thatu MMAEP Project

Our second new project is in Kwazulu Natal where we are funding intensive food garden work in two schools. These aim to provide food supplements for pupils. The project is being run by The Midland Meander Association Education Project (MMAEP) and is involving local communities to reduce the damage from marauding goats and chickens, and the occasional human thief.



These two food gardens present a stark contrast: one is in a very rural school called Carshalton which has a small plot of land and lies at the end of a long and sometimes impassable track in the north of the Kwazulu Natal Midlands. It has only 60 pupils. The other, Cedara, is set in the grounds of an agricultural college near the village of Howick, with lots of room for food garden expansion.

### **The Thatu Eco-Access Project**

Our third new project is a food garden at Thabo-Vuyo School in Sebokeng which is a school for children with learning difficulties. The school has specialised in sports activities and arts and crafts, but it also has a herb and an embryo vegetable garden, which will be developed by the children and teachers. The Eco-access team also plan to use the large grounds to help develop a Women's Entrepreneurship food gardening project which already has 50 possible students.

### **HOW YOU CAN HELP**

Create your own green shoots this spring with the new four varieties of South African seeds you will find on the Thatu Shop ([www.thatu.org](http://www.thatu.org)) by the end of March.

Thank you for supporting our Special Appeal! Of course we need more – a Standing Order of £5 a month will give them about R1,000 a year – fantastic value for money in South Africa allocated by people who understand its worth.

Do please tell friends and colleagues about Thatu.

EVERY LITTLE HELPS, and every penny will go to the projects. We were thrilled to receive £30 from Caroline and Cecily of Queen Elizabeth's Grammar School, Faversham who raised this money for us through a pancake sale.

You can find other ways of supporting Thatu under *How You Can Help* at [www.thatu.org](http://www.thatu.org)



**THATU**  
179 Lyham Road  
London  
SW2 5PY

[www.thatu.org](http://www.thatu.org)  
[info@thatu.org](mailto:info@thatu.org)  
07910 332 939

*If you would prefer to receive a hard copy of our newsletter, or no longer wish to receive one, please email us at [info@thatu.org](mailto:info@thatu.org)*

**Thatu is a UK Registered Charity No. 1108655**